



*Wooden windows*



*the New Standard*

[www.bako-okna.pl](http://www.bako-okna.pl)



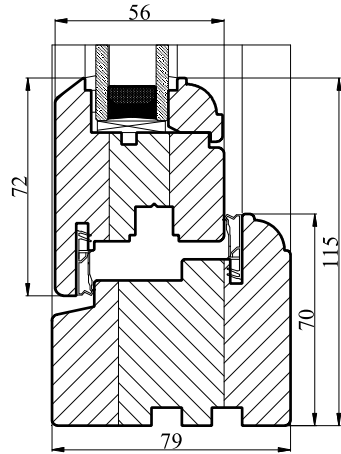
## **BAKO** ***windows and doors***

Window is an image of a house, part of an apartment, which like no other connects us with the external world. We specialise in production of windows typical for multi-dwelling buildings as well as individual projects according to customers' specifications. We manufacture and distribute high-quality wooden joinery. We designed our windows to protect against cold, wind, rain, noise, and therefore selection of the best solutions and products provide long-term protection, comfort and safety.

We are manufacturer and supplier of exclusive wooden windows and doors. As an effective and reliable partner we guarantee complete customer satisfaction. Our standards are quality, timeliness and confidence.

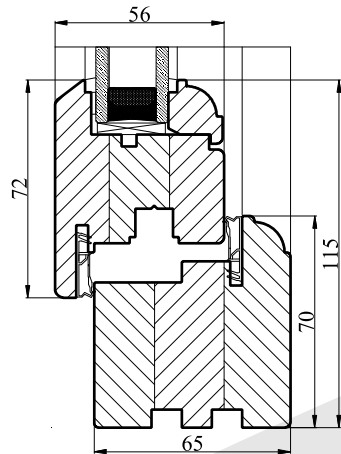
## **INLINE CASEMENT**

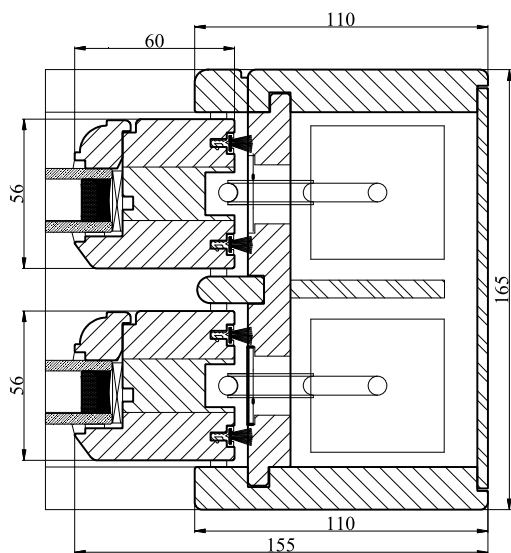
is specifically designed to replicate a period window whilst incorporating the latest modern operation and security features. Often referred to as a conservation window, the design is characterised by a sash that sits within the frame to create a flush finish externally, the perfect choice for listed properties.



## **STORMPROOF CASEMENT**

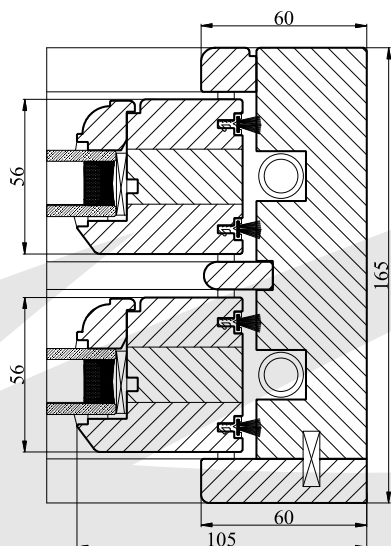
profile is reflecting a proven ability to withstand exposure to adverse weather conditions. Internally glazed with a modern concealed multi point locking system the design provides high security features compliant with Secured by Design conditions. The sash stands proud of the frame giving excellent gasket compression and the best weather rating available.





### **SLIDING SASH CORDS & WEIGHTS**

Window utilises pulleys and weights as the lift system. Primarily used when build circumstances dictate or when conservation requirements are a consideration. Ensuring the character and charm of the building is maintained whilst incorporating modern technologies, security and performance.



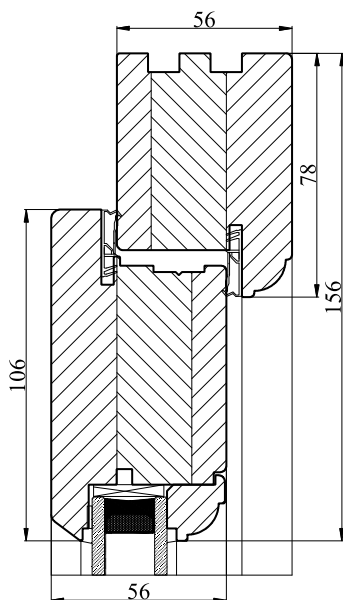
### **SLIDING SASH SPIRAL BALANCE**

Window or tensioned spring provides the mechanism of lift to the system. Predominantly used in new build construction, it provides a cost effective solution to this style whilst retaining all the unique features of a sash window.

## Wooden doors designs -UK profiles

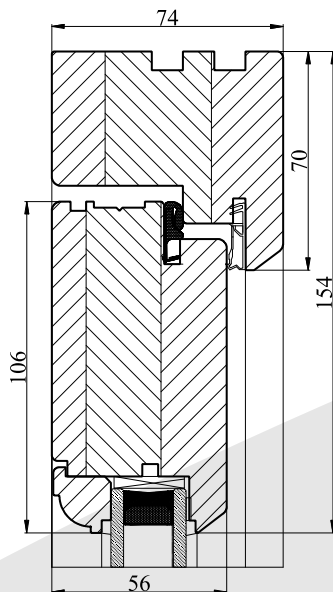
### **STORMPROOF DOOR**

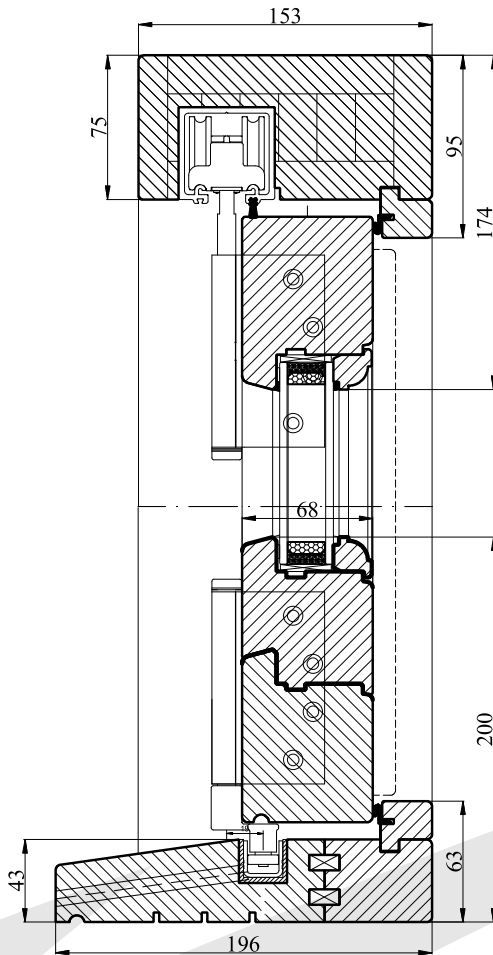
is resistant to changing weather condition. Door could have single or double leaf configuration. Ideal for use in conservatories, sunrooms and garden rooms, where maximum natural light is required. Supplied as standard, multi point espagnolette locking provides the safest locking system for your door.



### **INLINE DOOR**

is the perfect way to introduce maximum light into any room. This door can be designed to incorporate a number of single and double door leaf configurations. Flush finish sash with double handle and high security espagnolette locking system give You maximum safety.





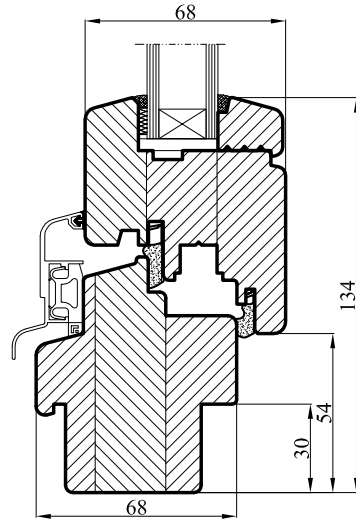
## **BI-FOLD DOORS**

are without doubt the new vogue. Folding doors open and close effortlessly and stack unobtrusively to create wide open vistas and bringing us closer to nature.

This design offers the ideal solution for creating large glazing areas with minimal timber allowing for uninterrupted views to be enjoyed from a property.

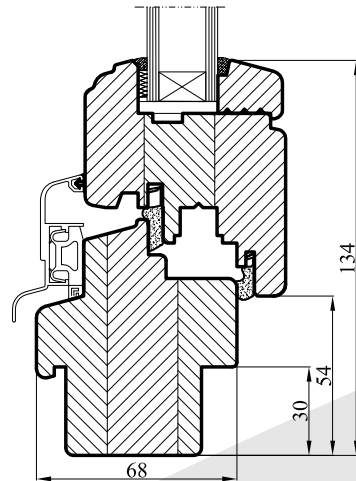
## **STANDARD** **68mm profile**

is characterised by rounded profile edges of radius 4mm. It's made of 68mm thick, three-ply square timber. A wide range of colours, shapes and accessories allow to fit the window into any décor. They are perfect for a single and multi-family dwellings as well as public buildings.

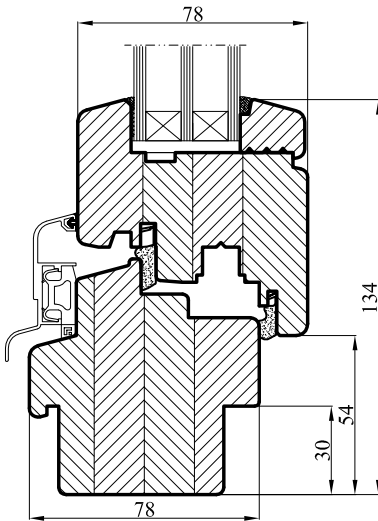


## **HISTORIC** **68mm profile**

windows can be used in a single and multi-family dwellings as well as public buildings where it is necessary to preserve the historic style of joinery and building. Profile provides old-style windows and functionality is guaranteed by the latest technology.

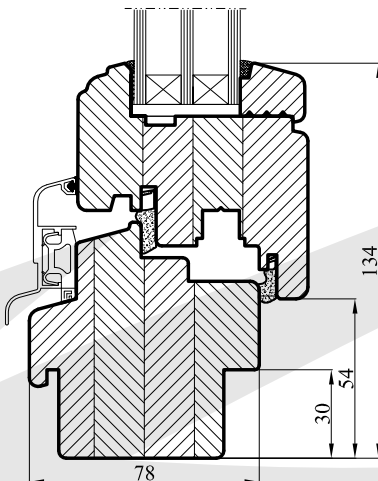


## Wooden windows designs -PL profiles



### **ENERGY LINE 78mm profile**

is characterised by rounded profile edges of radius 4mm. It's made of 78mm thick, four-ply square timber. These are energy efficient windows with a frame of 78mm. Deep profile guarantees better parameters for energy save. Energy efficiency rating has been increased by nearly 30% by using high thermal conductivity coefficient glass with of  $U=0,7$ .



### **ENERGY HISTORIC 78mm profile**

Profile provides the old-style windows and functionality is same as in ENERGY LINE 78mm windows. They are suitable for modern construction buildings which imitate classic design solutions and termo-modernisation of restored historical buildings.



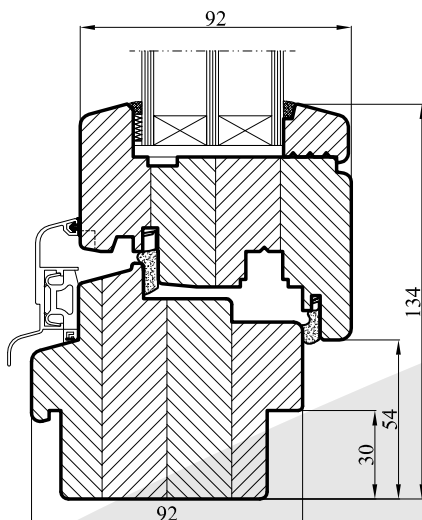
## Wooden windows designs -PL profiles



Unicontrol at work

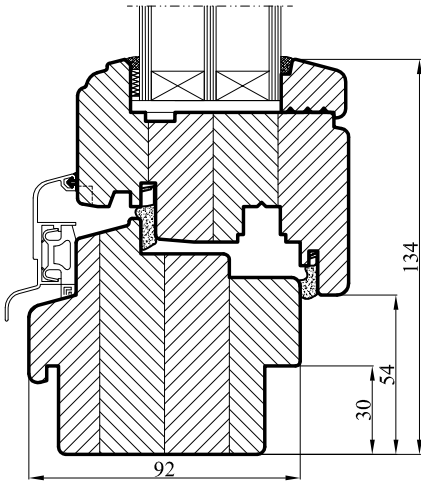
### **THERMO LINE** **92mm profile**

is characterised by rounded profile edges of radius 4mm. They are made of four-ply square timber which is 92mm thick. Energy efficiency rating of THERMO LINE 92mm windows has been increased by 50% by using glass with thermal conductivity coefficient of  $U=0,5$  (in comparison with STANDARD 68mm windows with  $U=1,1$ ).



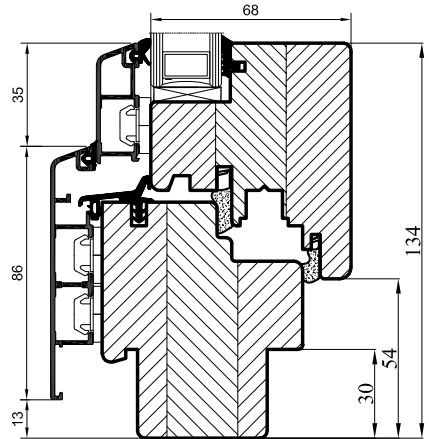
## **THERMO HISTORIC 92mm profile**

Profile provides the old-style windows and functionality is same as in THERMO LINE 92mm windows. These windows are suitable for buildings which imitate classic design solutions and termo-modernisation of restored historical buildings.



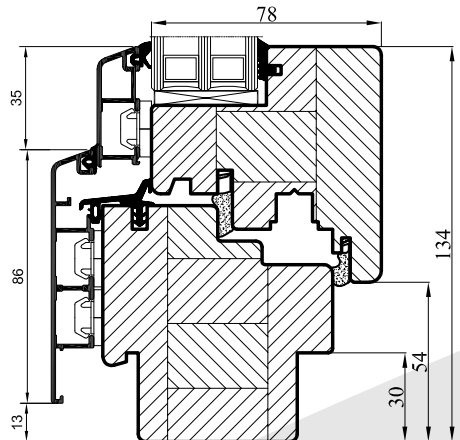
## **ALU-CLAD** **68mm profile**

delicately rounded shape frame which is protected by aluminium cover. It not only provides additional protection to the wood frame but also a decoration to the facade. Joining wood and aluminium allows maximum functionality and decoration. Outside aluminium frame guarantees real durability. Inside wooden frame provides warmth and beauty.

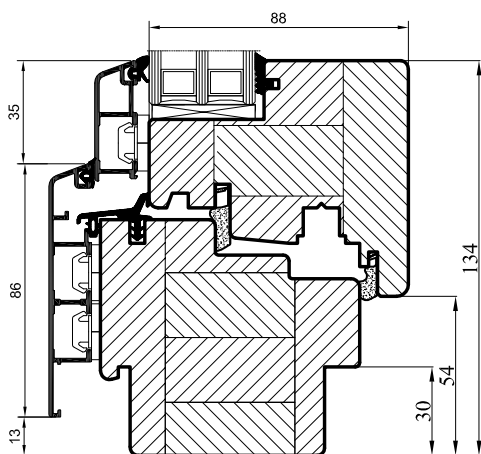


## **ENERGY ALU-CLAD** **78mm profile**

has increased energy efficiency rating by 30% by using glass with high thermal conductivity coefficient of  $U=0,7$  (to compare with ALU-CLAD 68mm windows with  $U=1,1$ ). These windows fit perfectly to modern construction buildings as well as to those more traditional design.



## Wooden - aluminium windows designs -PL profiles



### **THERMO ALU-CLAD 88mm profile**

Energy saving in today's construction is fundamental. Because of that, the role of the windows with higher thermal parameters is becoming more significant. Energy efficiency rating THERMO ALU-CLAD 88mm windows has been increased by 50% by using glass with thermal conductivity coefficient of  $U=0,5$  (to compare with ALU-CLAD 68mm windows with  $U=1,1$ ).

### **ALL BAKO PRODUCTS**

are made to individual specification and sizes. One of the benefits of timber is its flexibility as a material. Lead time is the most shorter than ever been, our production is in accordance with the needs of the customer. Each new products can be add permanent to our offer.



## **Technology**



**Pine** has a bright fresh colour, durability, excellent resistance to weather conditions and excellent thermal and acoustic insulation. It is recommended for customers who value traditional solutions and economical use.



**Meranti** this exotic species of hardwood timber from Indonesia has extremely high resistance to weather conditions. The windows made of this material are not only durable but also very warm and quiet.

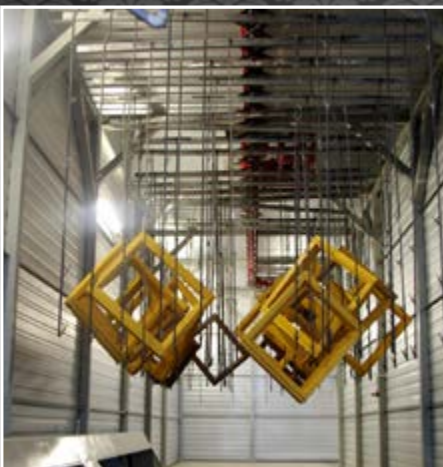


**Oak** is the best building material out of native broadleaved trees. Oak wood is hard, very durable and resistant to abrasion. It is characterised by high durability and resistance to changing moisture conditions.

# BAKO

**Bartnik Kowalczyk General Partnership company**

*manufacturer and a supplier of exclusive wooden windows and doors.*



Ul. 4 Sierpnia 4C

16-411 Szypliszki, Polska

Phone +48875657139

Fax. +48875657139

E-mail: [biuro@bako-okna.pl](mailto:biuro@bako-okna.pl)